

CSHD6-60C
SURFACE MOUNT
DUAL, COMMON CATHODE
SILICON SCHOTTKY RECTIFIERS
6 AMP, 60 VOLTS



www.centrasemi.com

DESCRIPTION:

The CENTRAL SEMICONDUCTOR CSHD6-60C is a Silicon Schottky Rectifier designed for surface mount fast switching applications requiring a low forward voltage drop.



MARKING: FULL PART NUMBER

MAXIMUM RATINGS: ($T_C=25^\circ\text{C}$ unless otherwise noted)	SYMBOL		UNITS
Peak Repetitive Reverse Voltage	V_{RRM}	60	V
Average Rectified Forward Current ($T_C=120^\circ\text{C}$)	I_O	6.0	A
Peak Forward Surge Current, $t_p=10\text{ms}$	I_{FSM}	50	A
Peak Repetitive Reverse Surge Current, $t_p=2.0\mu\text{s}$	I_{RRM}	1.0	A
Critical Rate of Rise of Reverse Voltage	dv/dt	10,000	V/ μs
Operating and Storage Junction Temperature	T_J, T_{stg}	-65 to +150	$^\circ\text{C}$
Thermal Resistance Per Diode	θ_{JC}	3.5	$^\circ\text{C/W}$

ELECTRICAL CHARACTERISTICS PER DIODE: ($T_C=25^\circ\text{C}$ unless otherwise noted)

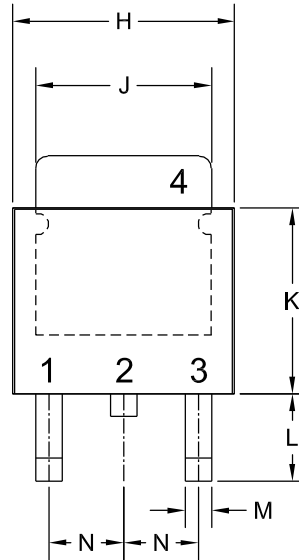
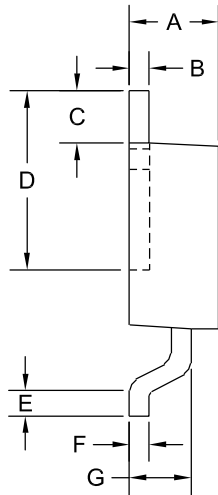
SYMBOL	TEST CONDITIONS	MAX	UNITS
I_R	$V_R=60\text{V}$	30	μA
I_R	$V_R=60\text{V}, T_C=125^\circ\text{C}$	10	mA
V_F	$I_F=3.0\text{A}$	0.70	V
V_F	$I_F=3.0\text{A}, T_C=125^\circ\text{C}$	0.65	V
V_F	$I_F=6.0\text{A}$	0.90	V
V_F	$I_F=6.0\text{A}, T_C=125^\circ\text{C}$	0.85	V

CSHD6-60C

**SURFACE MOUNT
DUAL, COMMON CATHODE
SILICON SCHOTTKY RECTIFIERS
6 AMP, 60 VOLTS**



DPAK RECTIFIER CASE - MECHANICAL OUTLINE

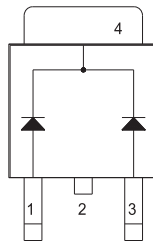


R2

LEAD CODE:

- 1) Anode 1
 - 2) Cathode
 - 3) Anode 2
 - 4) Cathode
- Pin 2 is Common to the Tab (4).

MARKING: FULL PART NUMBER



SYMBOL	DIMENSIONS			
	INCHES		MILLIMETERS	
	MIN	MAX	MIN	MAX
A	0.083	0.108	2.10	2.75
B	0.016	0.024	0.40	0.60
C	0.063		1.60	
D	0.203	0.219	5.15	5.55
E	0.039		1.00	
F	0.020		0.50	
G	0.051	0.071	1.30	1.80
H	0.248	0.268	6.30	6.80
J	0.197	0.217	5.00	5.50
K	0.209	0.224	5.30	5.70
L	0.090	0.106	2.30	2.70
M	0.012	0.031	0.30	0.80
N	0.091		2.30	

DPAK RECTIFIER (REV: R2)

R8 (17-February 2010)